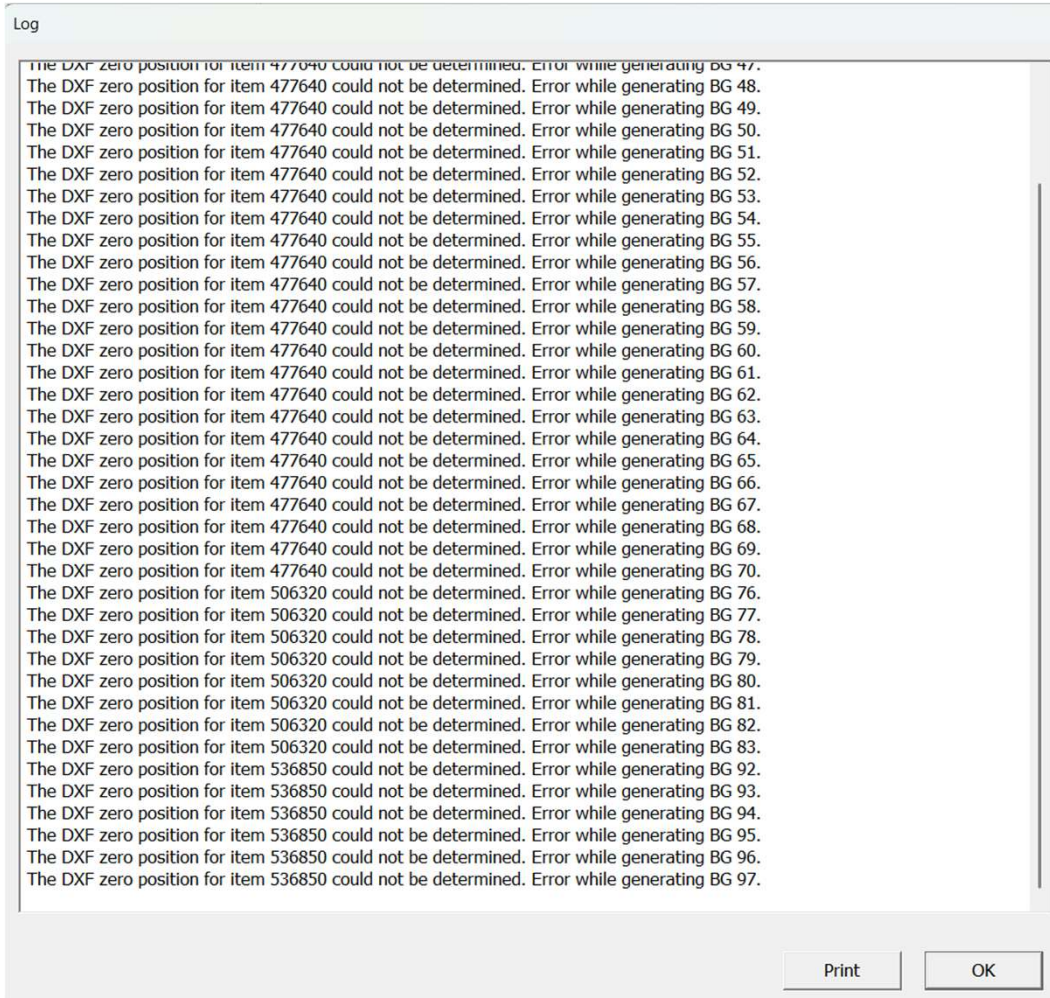




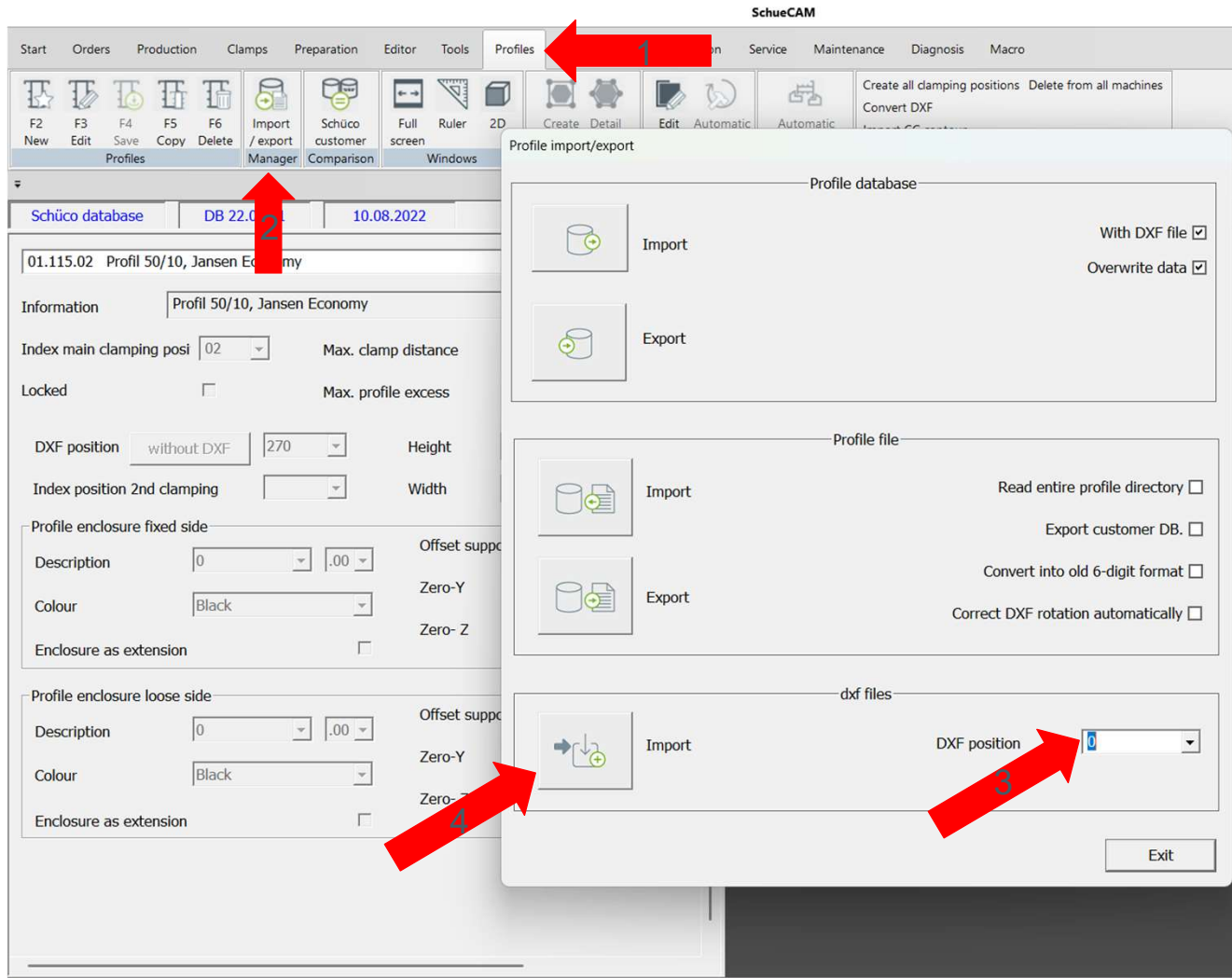
Adding a profile to your database in SchueCAM

Why do I have to add a DXF to the database?



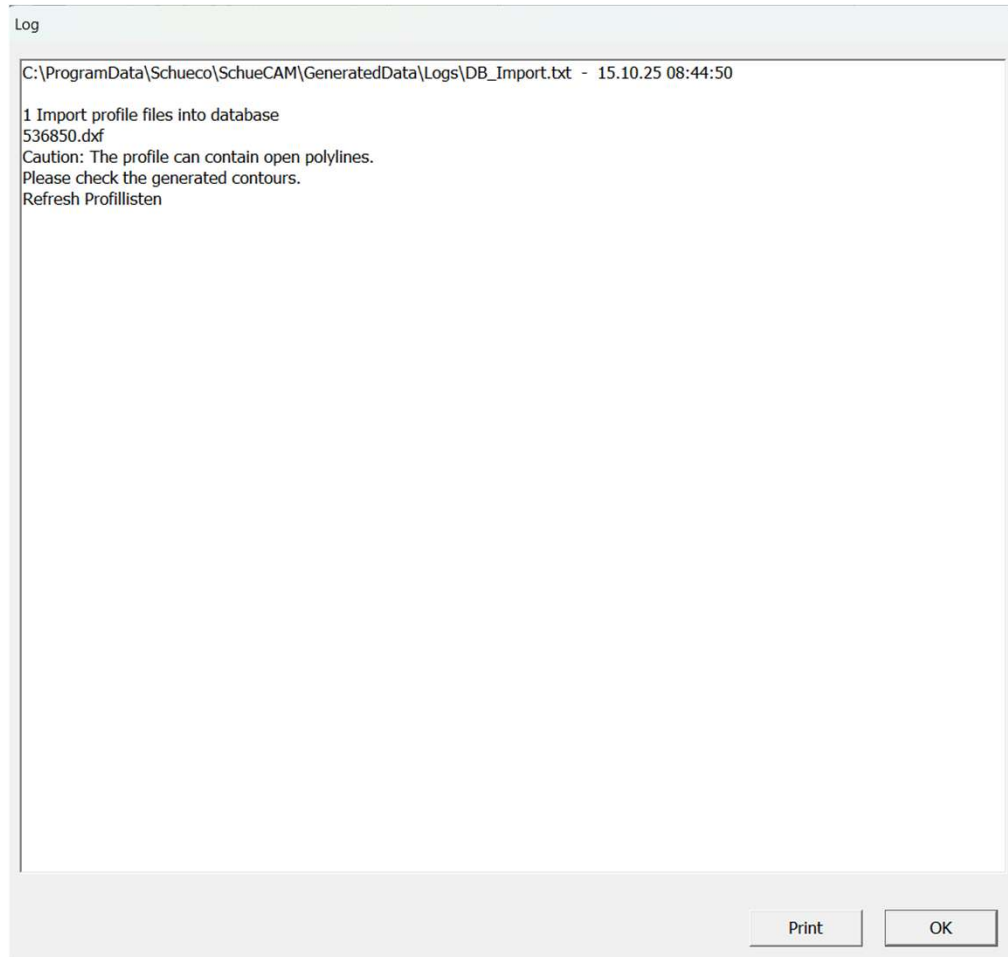
When importing a job file, you receive an error message stating that the DXF zero position for item XXX could not be determined. The profiles are then not displayed in the preparation menu. The profiles are missing from your database and must be added manually if you want to process them on the machine.

Import dxf-files in SchueCAM



Open the Profiles tab in SchueCAM(1). Then click on Import/Export Manager(2). In the lower section, you will find the item DXF files. First select DXF layer 0 (3). Then click on Import(4) and select the profile in the folder you created earlier. You can also import several profiles at the same time.

Import dxf-files in SchueCAM



You will then receive a message stating that the selected profile has been imported into the database. Now reload the job. The profiles will then be displayed in the preparation and production menu.

Contact

Schueco Digital GmbH

Tel. +49 521 783 141

E-Mail: ServiceDesk@schueco.com

Schueco fabrication support

Tel. +49 521 783 1000

E-Mail: MBM_Service@schueco.com

Fastviewer – start session



If the machine is connected to the Internet, you can start the fastviewer by clicking in Online Help.